

# Top 6 Off the Beaten Path Destinations for Adventure Lovers

Are you an adventure lover, looking for breathe taking unique views, unforgettable hiking experience and trips? Then the following off the beaten path destinations are ideal for you.

## Explore the Vatnajokull Ice Cave (Iceland)

Sometimes known as the Crystal cave, the Vatnajokull ice cave is truly a mesmerizing wonder of nature. However, the ice cave should only be visited in winter because during spring or summer, the ice begins to melt and the glaciers tend to move faster which can be quite dangerous. On top of that you should always have a tour guide when visiting the caves.



## Hike the Quiraing (Isle of Skye, Scotland)

The Quiraing is a landslide on the Eastern part of Meall na Suiramach, the summit of the Trotternish Ridge on the Isle of Skye in Scotland. It is the only part of the landslide that is still moving. In fact the road at its base requires repairs each year. This is aimed at showing how adventurous a trip to this place can be. The landscape here offers a number of distinctive yet attractive features that include the Needle – a jagged 120 foot high pinnacle, the Table – a flat area from the plateau and the Prison. These areas are ideal for photographers and walkers. The view here is amazing and the weather is conducive for photography and trips.

## Hike to Kelimutu (Indonesia)

Kelimutu is a volcano located near a small a town of Moni in the central Flores Island in Indonesia. The volcano features 3 striking summit crater lakes of varying colors. The Tiwa Ata Bupu also known as the Lake of the Old People is normally blue and is the westernmost of the three lakes. The remaining two lakes Tiwu Koo Fai Nuwa Muri and Tiwa Ata Polo share a crater wall and are green and red in color respectively. The colors of these lakes change from time to time. From Moni, a village close to Kelimutu you can do many treks in the surrounding rice fields, hills and forests as you explore the wonders of nature. The Kelemutu crater lakes belong to the vast Kelimutu National Park that is known for its unique natural features and biodiversity cultural heritage.

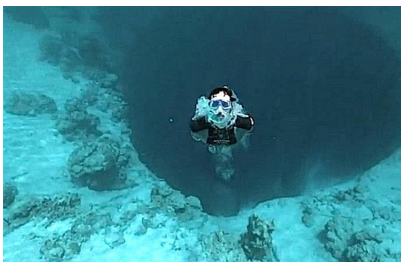


### **Explore the Melissani Cave (Greece)**

The Melissani cave is a cave located on the Greek island of Kefalonia. Forests surround the cave giving it a more natural and picturesque view. The cave is located east of Evmorfia and Agia Dynati Mountains. The cave also has a lake that is bordered with trees and forests. It is 3.5 km long, 40 meters wide and 36 meters high. The cave features an underground lake that was discovered in 1951 and includes an islet with the Pan's sanctuary that was discovered by S. Marinatos, an archeologist. Visitors and tourists reach the lake via an underground tunnel enabling them to explore this natural beauty on a boat and with the help of a guide.

### **Dive in the Dean's Blue Hole (Bahamas Long Island)**

The Deans Blue Hole is the world's deepest known underwater cave with an entrance below the sea level. It is enclosed on three sides by a natural rock amphitheater and on the fourth side is a turquoise lagoon. Blue holes are considered to be some of the most puzzling and unexplored wonders of the world. These holes serve as entry points to the world's most amazing cave systems that attract free divers who have the guts to investigate the mysteries of these breath taking underwater chambers. Only highly skilled divers are allowed to dive.



### **Sail on Lake Retba (Senegal)**

Lake Retba is a true natural phenomenon located approximately 30 miles from Dakar in Senegal. The lake's amazing coloration is derived from the high salt concentration of the water. It is in fact one and half times that of the Red Sea. The water color turns from mauve to deep pink depending on the time of day and the amount of sunlight. The most exciting activity that attracts many tourists to this lake is sailing on the lake and taking pictures.

Article link:

<http://www.tourism-review.com/travel-tourism-magazine-adventure-best-off-the-beaten-path-destinations-article2407>